

Eyeline® rear projection electric screens

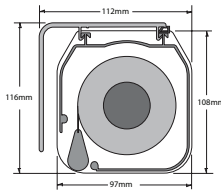
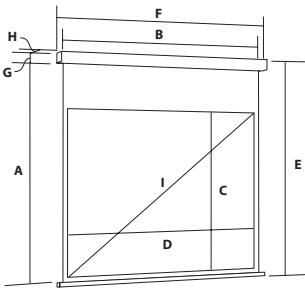
Rear projection has the benefit of enhanced brightness and contrast, noise reduction and shadow free images

- The area in front of the screen is clear for the presenter and the viewing audience
- Rear projection coral material is used and available with or without black borders
- The robust channel fix screen case enables fast secure installation
- Screen is supplied complete with ceiling/wall brackets
- Electrical wall switch for electrical installation
- Video format (4:3) available with and without black borders
- Video format (4:3) with borders has 200mm black drop, widescreen formats (16:9 and 16:10) have a 500mm black drop

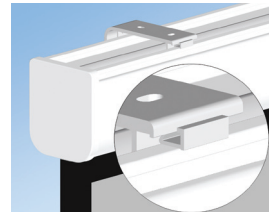
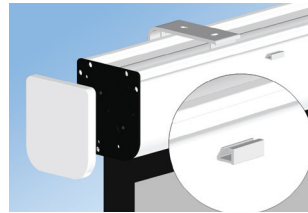
Extended Range



EYELINE



Channel fix mounting



Screen Size A Height	B Width	View Area C Height	D Width	Format	Max. Drop E	Case Size F Length	G Height	H Depth	Diagonal I	Weight	Code
1370mm	1800mm	1370mm	1800mm	4:3 no border	1486mm	1880mm	116mm	112mm	89 inch	12kg	RPE18V
1900mm	2500mm	1900mm	2500mm	4:3 no border	2016mm	2580mm	116mm	112mm	124 inch	17kg	RPE25V
1370mm	1800mm	1270mm	1700mm	4:3	1686mm	1880mm	116mm	112mm	84 inch	12kg	RPE18VB
1900mm	2500mm	1800mm	2400mm	4:3	2216mm	2580mm	116mm	112mm	118 inch	17kg	RPE25VB
1160mm	1800mm	1060mm	1700mm	16:10	1776mm	1880mm	116mm	112mm	79 inch	12kg	RPE18ST
1600mm	2500mm	1500mm	2400mm	16:10	2216mm	2580mm	116mm	112mm	111 inch	17kg	RPE25ST
1050mm	1800mm	950mm	1700mm	16:9	1666mm	1880mm	116mm	112mm	77 inch	12kg	RPE18WB
1450mm	2500mm	1350mm	2400mm	16:9	2066mm	2580mm	116mm	112mm	108 inch	17kg	RPE25WB

Accessories see page 222

Screens include 50mm black borders on all 4 sides (except top 2)
Additional extended black drop: 4:3 models have 200mm (except top 2), 16:9 and 16:10 have 500mm

