

Projection Screens - Wall Mounted Manual



210304E

Eyeline® Basic wall screens

Popular entry level range of manual pull down screens

- Good quality matte white woven cloth
- Easy to mount to wall or ceiling through end cap mounting brackets
- Square 1:1 screen allows for multi format projection
- Optional extension brackets for clearing obstructions
- Pull rod available for use with high mounted screens
- Plain matte white surface
- Entry level basic screen

NEW SAFETY RETRACTION

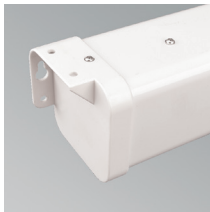
All of our manual projection screens now feature a simple slow safety retract mechanism (SSR). Simply release the screen from its open viewing position and let it glide back in to its case unaided. SSR, replacing difficulty with simplicity and safety.

EYELINE

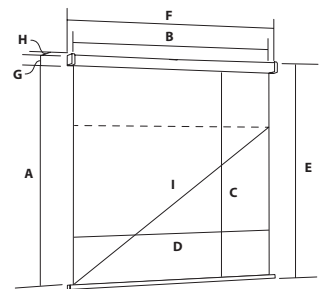
Borderless design



End cap fixing



Optional extension brackets



Screen Size A Height (max)	B Width	View Area C Height (max)	D Width	Format 1:1 maximum	Max. Drop E	Case Size F Length	G Height	H Depth	Diagonal in video format I	Weight	Code
1250mm	1250mm	1250mm	1250mm	Variable	1338mm	1290mm	68mm	68mm	61 inch	7kg	210301E
1500mm	1500mm	1500mm	1500mm	Variable	1588mm	1540mm	68mm	68mm	74 inch	8kg	210302E
1800mm	1800mm	1800mm	1800mm	Variable	1888mm	1840mm	68mm	68mm	88 inch	10kg	210303E
2000mm	2000mm	2000mm	2000mm	Variable	2088mm	2040mm	68mm	68mm	98 inch	11kg	210304E
2400mm	2400mm	2400mm	2400mm	Variable	2488mm	2440mm	68mm	68mm	118 inch	13kg	210305E
Extension Bracket		550mm									210710
Pull Rod for higher screens											200713